

**(SVHC)**

CANEC23009890202

2023 09 21

1

13



(SVHC)

1.

<http://echa.europa.eu/web/guest/candidate-list-table>

2. REACH

2.1

1907/2006 EC 33 57 59  
0.1%

1907/2006 EC 57  
59 (a) 1 / / 7 4 (b)  
0.1%

2021 SVHC 1 5 0.1% w/w  
SCIP 2008/98/EC ECHA

2.2

SVHC

31 1907/2006 REACH

2.3

0.1% (w/w) / 1272/2008 CLP  
1907/2006 REACH

(SDS)

- 1272/2008 CLP
- 1272/2008 CLP
- 1272/2008 CLP ;
- 1272/2008 CLP

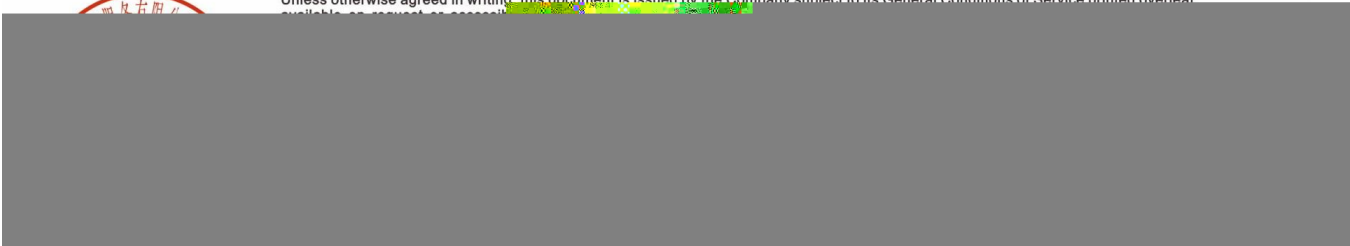
(a) 0.2 1 (w/w)

(b) PBT vPvB 0.1 (w/w)

(c) 0.1

(w/w)

(d)





(SVHC)

CANEC23009890202

2023 09 21

3

13

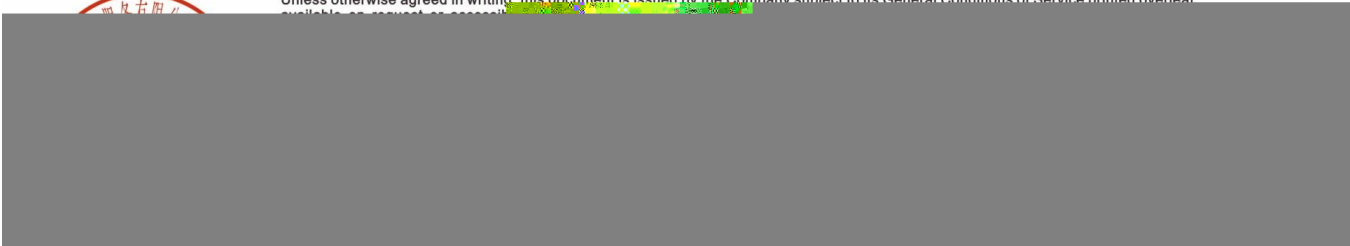
ID		ID	SGS ID
001		A1	CAN23-0098902-0001.C001

SGS

ICP-OES UV-VIS GC-MS HPLC-DAD/MS



Unless otherwise agreed in writing, this document is issued by the Company subject to its General Conditions of Service printed overleaf available on request or access.





CANEC23009890202

2023 09 21

4 13

(SVHC)

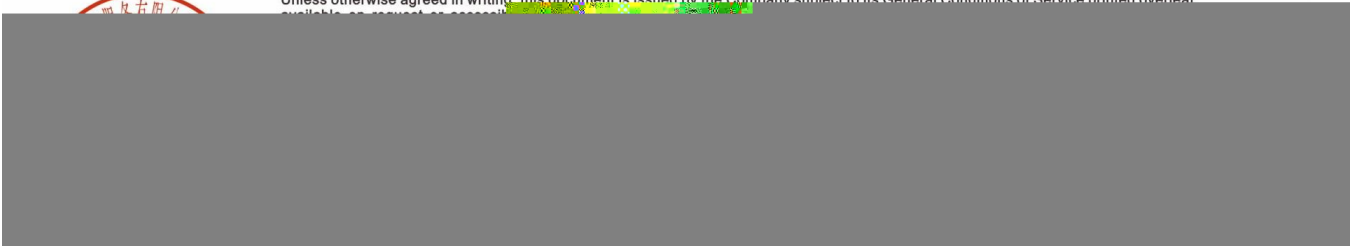
		CAS No.	001 (%)	RL (%)
-	SVHC	-	ND	-

**SVHC**

		CAS No.	001 (%)	RL (%)
/	SVHC	-	ND	-



Unless otherwise agreed in writing, this document is issued by the Company subject to its General Conditions of Service printed overleaf available on request or access.



(SVHC)

## SVHC:

			CAS No.	RL (%)
I	1	4,4'- (MDA)	101-77-9	0.050
I	2	2,4,6- -5- ( )	81-15-2	0.050
I	3	C10-13 ( )	85535-84-8	0.050
I	4		120-12-7	0.050
I	5	(BBP)	85-68-7	0.050
I	6	(2- ) (DEHP)	117-81-7	0.050
I	7	(TBTO)	56-35-9	0.050
I	8	*	7646-79-9	0.005
I	9	*	1303-28-2	0.005
I	10	*	1327-53-3	0.005
I	11	(DBP)	84-74-2	0.050
I	12	(HBCDD) HBCDD, -HBCDD, -HBCDD) ( -	-	0.050
I	13	*	7784-40-9	0.005
I	14	*	10588-01-9 /7789-12-0	0.005
I	15	*	15606-95-8	0.005
II	16	2,4-	121-14-2	0.050
II	17		79-06-1	0.050
II	18	**	90640-80-5	0.050
II	19	**	90640-81-6	0.050
II	20	**	91995-15-2	0.050
II	21	**	91995-17-4	0.050
II	22	**	90640-82-7	0.050
II	23		84-69-5	0.050
II	24	(C.I. 104)*	12656-85-8	0.005
II	25	*	7758-97-6	0.005
II	26	(C.I. 34)*	1344-37-2	0.005
II	27	**	65996-93-2	0.050
II	28	(2- )	115-96-8	0.050
III	29	*	7789-09-5	0.005
III	30	*	-	0.005
III	31	*	12179-04-3 /1303-96-4 /1330-43-4	0.005
III	32	*	7789-00-6	0.005
III	33	*	7778-50-9	0.005
III	34		7775-11-3	0.005



CANEC23009890202

2023 09 21

6 13

(SVHC)

			CAS No.	RL (%)
IV	38		109-86-4	0.050
IV	39	, , *	-	0.005
IV	40	*	1333-82-0	0.005
IV	41	*	513-79-1	0.005
IV	42	*	71-48-7	0.005
IV	43	*	10141-05-6	0.005
IV	44	*	10124-43-3	0.005
V	45	1,2,3-	96-18-4	0.050
V	46	1,2- - (C6-8 ) ( C7)	71888-89-6	0.050
V	47		68515-42-4	0.050
	48	1- -2-	872-50-4	0.050

Unless otherwise agreed in writing, this document is issued by the Company subject to its General Conditions of Service printed overleaf.

CANEC23009890202

2023 09 21

7

13

SVHC)

			CAS No.	RL (%)
VIII	116	*	1317-36-8	0.005
VIII	117	*	12036-76-9	0.005
VIII	118	*	1314-41-6	0.005
VIII	119	*	12060-00-3	0.005
<del>VIII</del>	120	*	12626-81-2	0.005
VIII	121		625-45-6	0.050
VIII	122	1,2-	75-56-9	0.050
VIII	123	N,N-	68-12-2	0.050
VIII	124	N-	79-16-3	0.050
VIII	125		776297-69-9	0.050
VIII	126	-	97-56-3	0.050
VIII	127	2-	95-53-4	0.050
VIII	128		72629-94-8	0.050
VIII	129	*	12065-90-6	0.005
VIII	130	*	8012-00-8	0.005
VIII	131	*	68784-75-8	0.005
VIII	132	*	11120-22-2	0.005
VIII	133	*	62229-08-7	0.005
VIII	134	*	78-00-2	0.005
VIII	135	*	1220-11-0 0 1 41	

Unless otherwise agreed in writing, this document is issued by the Company subject to its General Conditions of Service printed overleaf available on request or access.





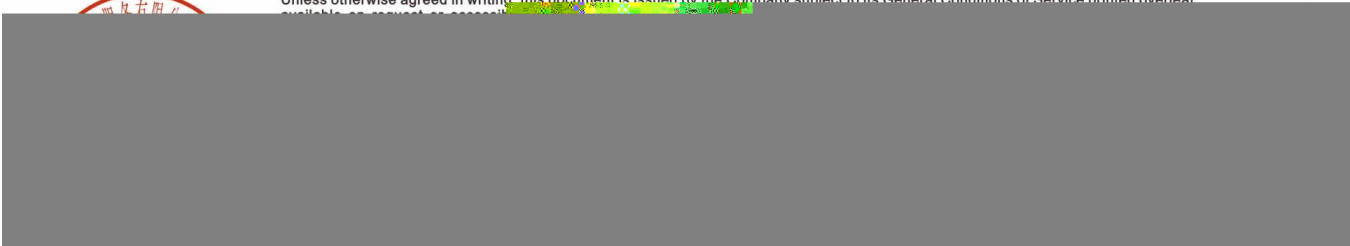
CANEC23009890202

2023 09 21

9 13

(SVHC)

			CAS No.	RL (%)
XII	157	2- -2- -4,6- (UV-320)	3846-71-7	0.050
XII	158	- (2- ) (DOTE)	-	0.050
XII	159	*	7790-79-6	0.005
XII	160	*	10124-36-4 /31119-53-6	0.005
XII	161	- (2- ) (DOTE) - (2- ) (MOTE)	-	0.050
XIII	162	1,2- , (C6-10) / 1,2- , 0.3	-	0.050
XIII	163	5- -2-(2,4- -3- -1- )-5- -1,3- [1] 5- -2-(4,6- -3- -1- )-5- -1,3- [2] [ [1] [2] ]	-	0.050
XIV	164	1,3-	1120-	



(SVHC)

			CAS No.	RL (%)
XIX	187	(D6)	540-97-6	0.050
XIX	188	(EDA)	107-15-3	0.050
XIX	189		7439-92-1	0.005
XIX	190	(D4)	556-67-2	0.050
XIX	191		61788-32-7	0.050
XX	192	1,7,7- -3-( ) [2.2.1] -2- (3- )	15087-24-8	0.050
XX	193	4,4'-(1,3- ) (1,3-DMBBP)	6807-17-6	0.050
XX	194	(k) (BkF)	207-08-9	0.050
XX	195	(FLT)	206-44-0	0.050
XX	196	(PHE)	85-01-8	0.050
XX	197	(PYR)	129-00-0	0.050
XXI	198	2,3,3,3- -2-( ) ( ) (HFPO-DA)	-	0.050
XXI	199	2-	110-49-6	0.050
XXI	200	4- (PTBP)	98-54-4	0.050
XXI	201	(4- ) (TNPP)( 0.1% 4- )	-	0.050
XXII	202	2- -2- -4'-	119313-12-1	0.050
XXII	203	2- -1-(4- )-2- -1-	71868-10-5	0.050
XXII	204		71850-09-4	0.050
XXII	205		-	0.050
XXIII	206	1-	1072-63-5	0.050
XXIII	207	2-	693-98-1	0.050
XXIII	208		94-26-8	0.050
XXIII	209	( ) **	22673-19-4	0.050
XXIV	210		143-24-8	0.050



CANEC23009890202

2023 09 21

11

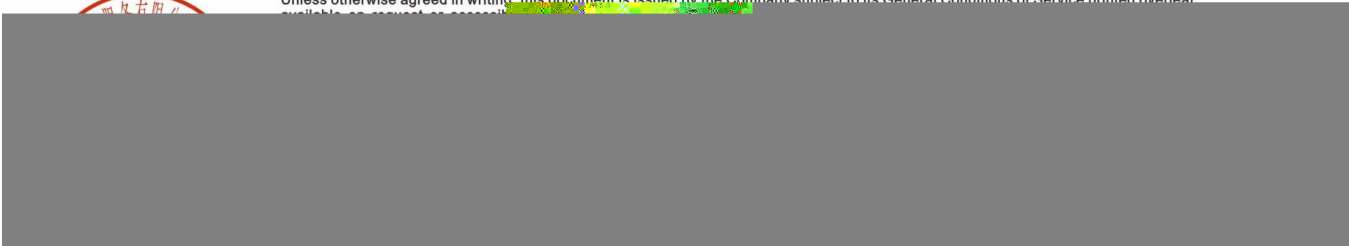
13

(SVHC)

			CAS No.	RL (%)
XXVI	222	S-([5.2.1.0'2,6]		

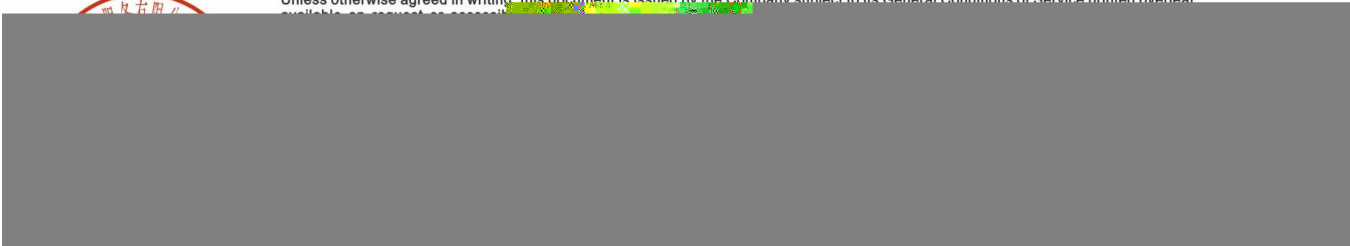
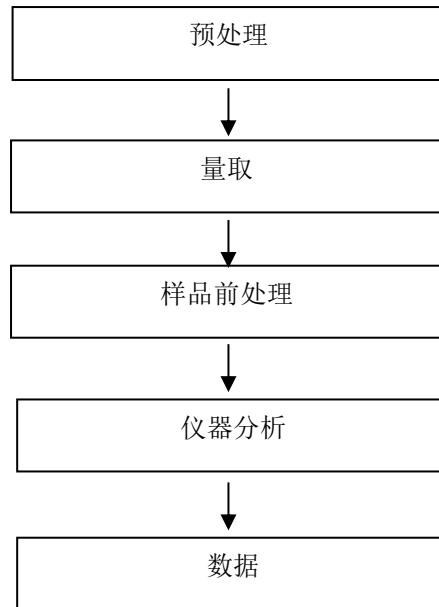


Unless otherwise agreed in writing, this document is issued by the Company subject to its General Conditions of Service printed overleaf available on request or access.





(SVHC)





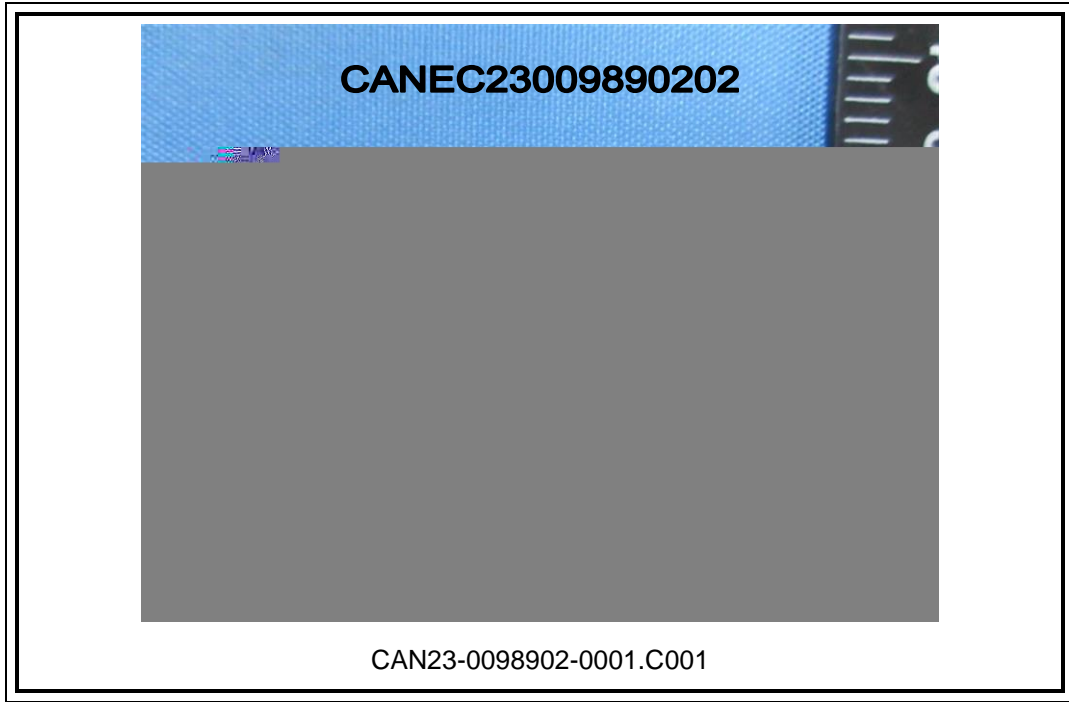
CANEC23009890202

2023 09 21

13

13

(SVHC)



SGS

\*\*\*

\*\*\*



Unless otherwise agreed in writing, this document is issued by the Company subject to its General Conditions of Service printed overleaf available on request or access.

